

# ROHNER AG/SA

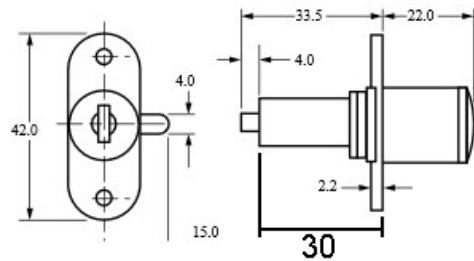
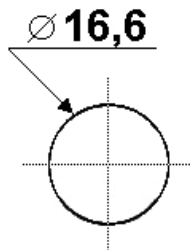
Postfach 398  
6210 Sursee

Telefon 041 921 77 70  
Fax 041 921 77 69

www.rohner-sursee.ch  
info@rohner-sursee.ch

## SPEZIALZYLINDER

## 32400-30

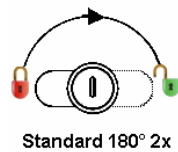


<b>Schliessungen</b>	Lager max. 1 (Werk max.500)	<b>L = Material max.</b>	19mm
<b>PP/Hauptschlüssel</b>	auf Anfrage		
<b>Oberfläche</b>	matt vernickelt / Zinkdruckguss roh		
<b>Für</b>	MLM Goldin Huwil Lehmann Hekna		

### Riegel



### Schliessweg



### ähnliche Produkte



32400-25



32400-36